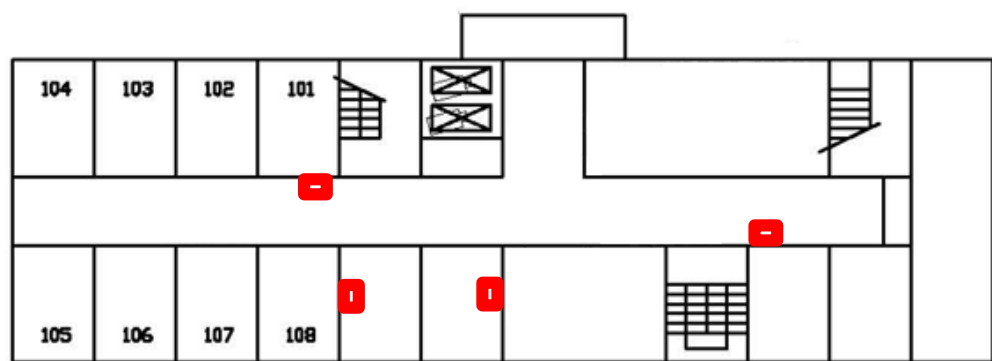
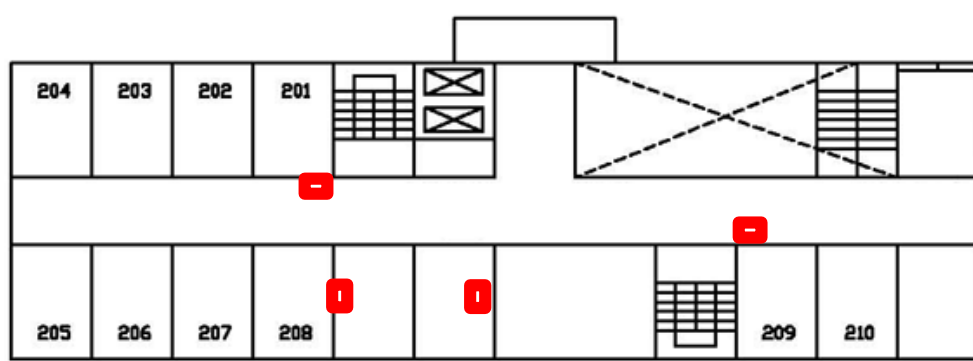


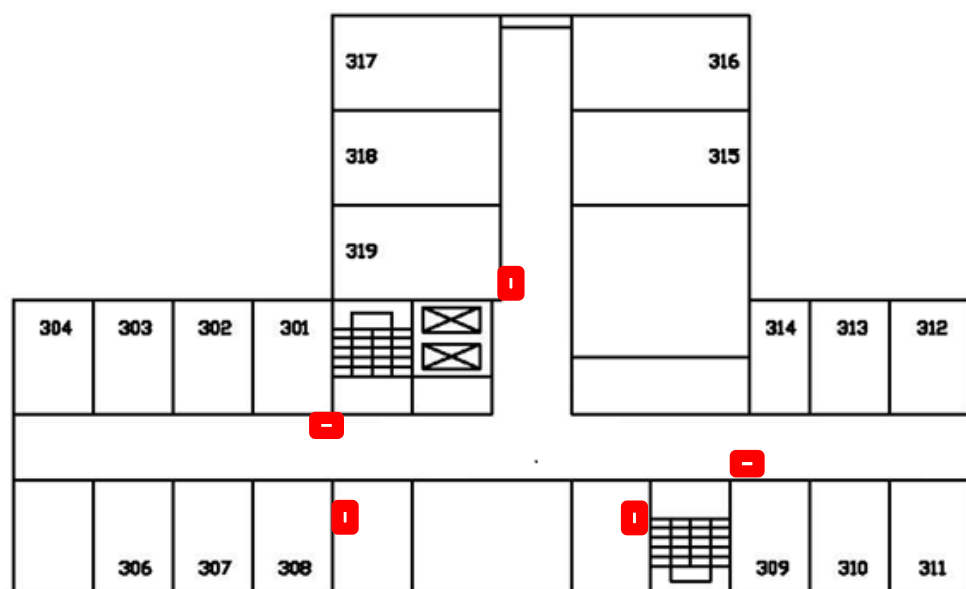
# 大詠絮樓緊急按鈕設置平面圖



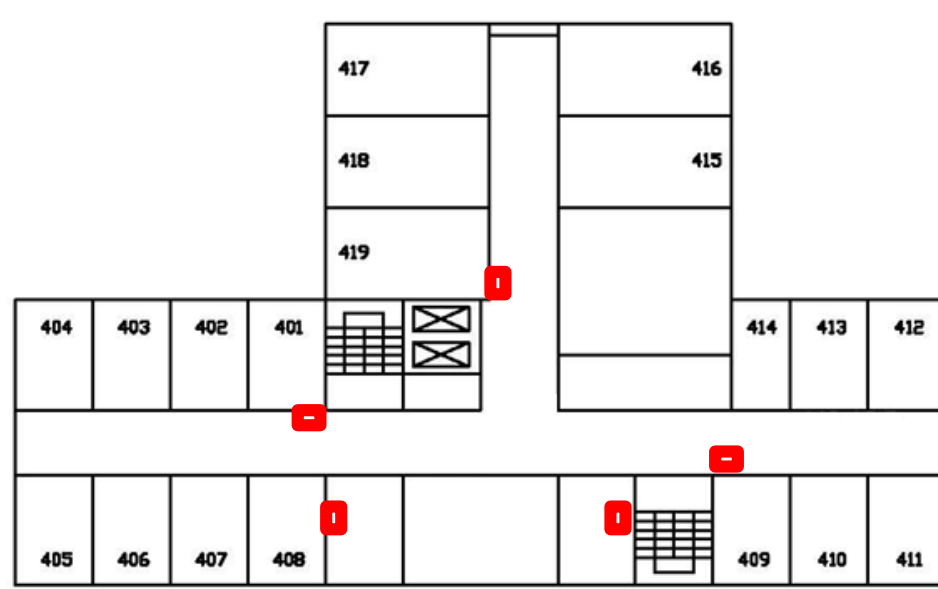
一樓



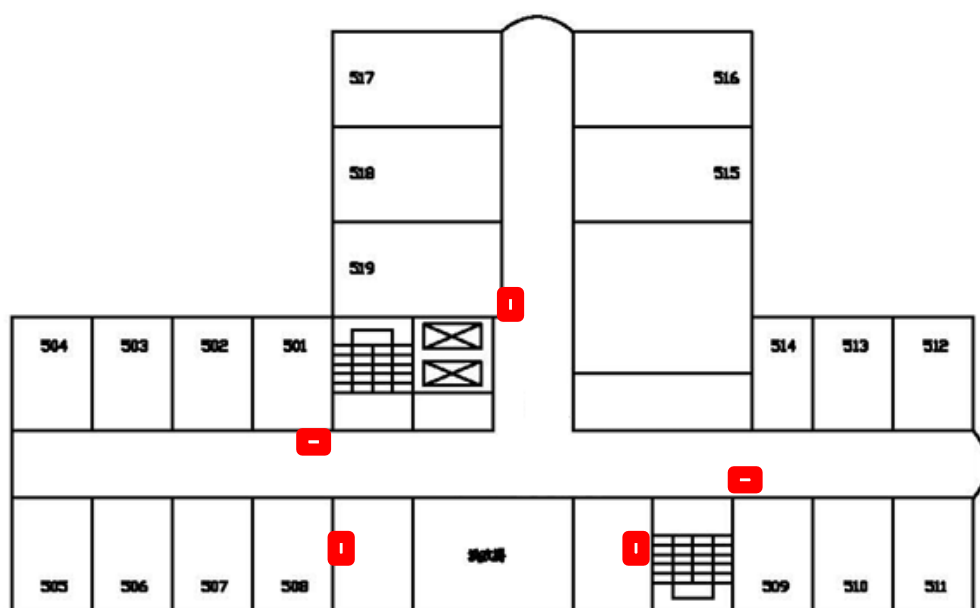
二樓



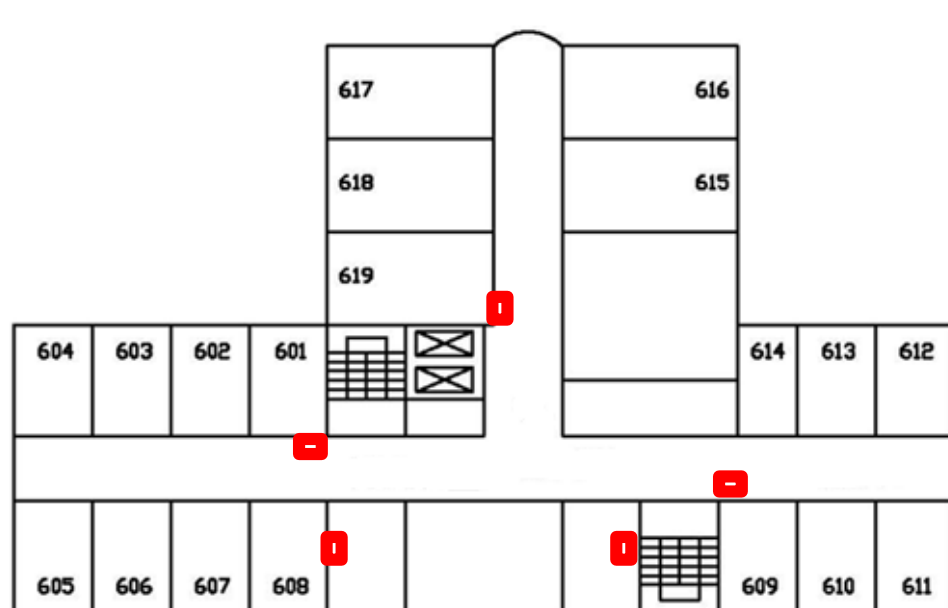
三樓



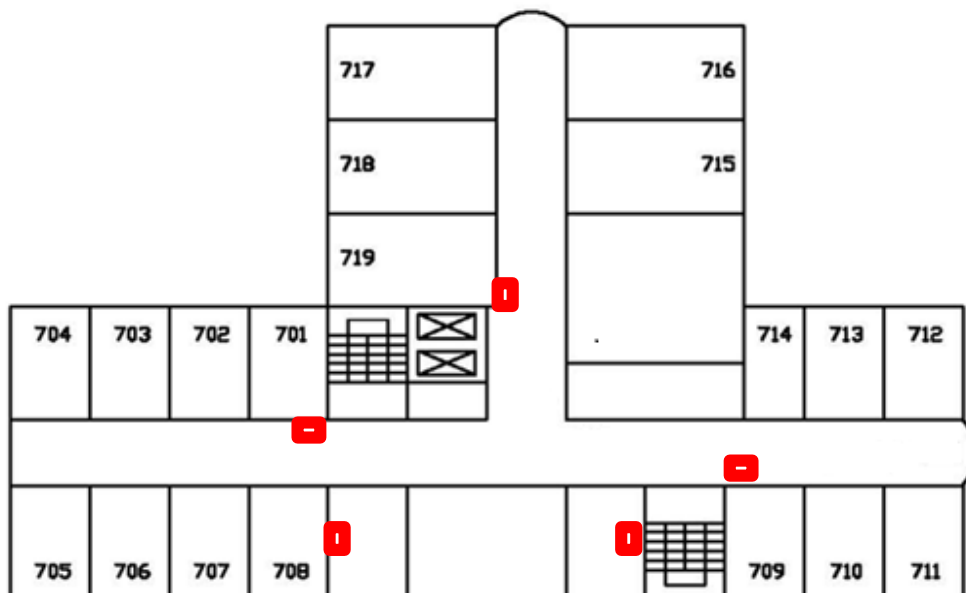
四樓



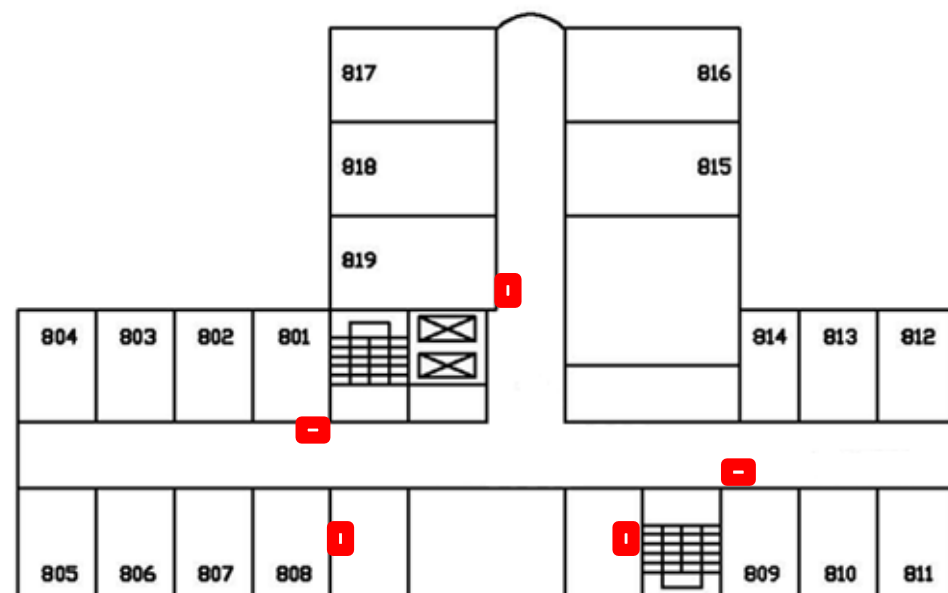
五樓



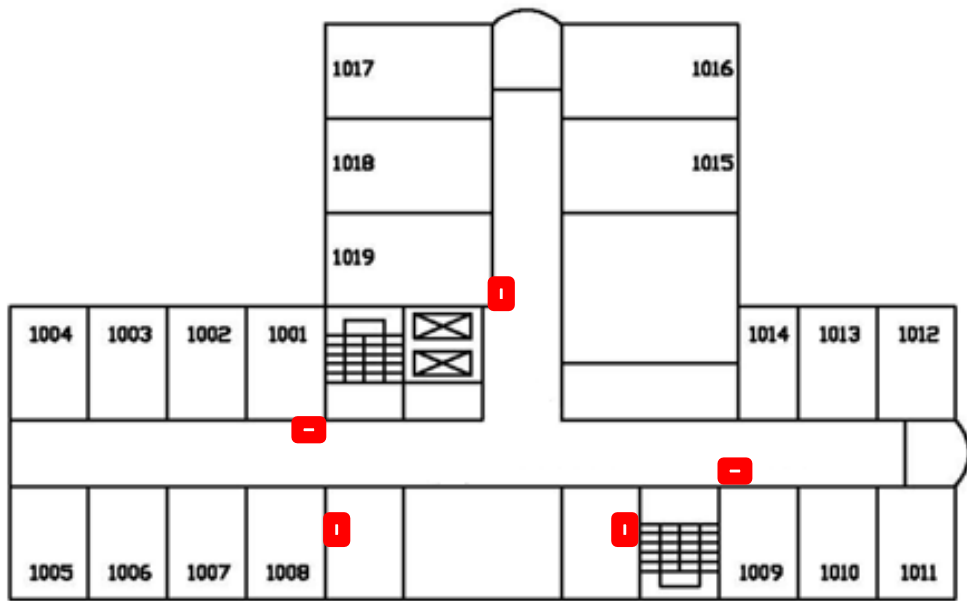
六樓



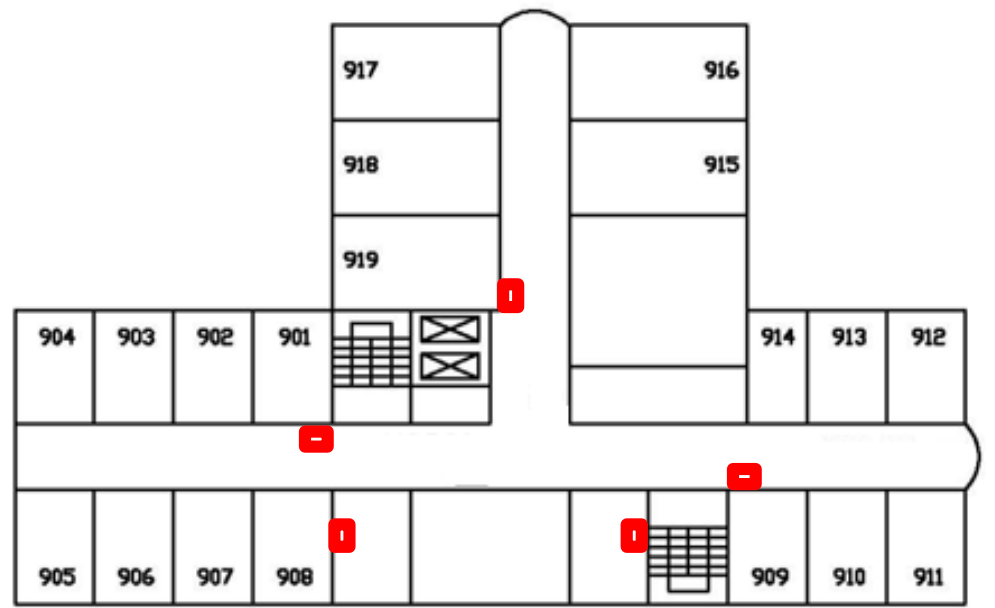
七樓



八樓



九樓



十樓

■ 緊急按鈕設置地點				
1樓廁所左側	1樓廁所右側	1樓左側樓梯旁	1樓右側樓梯旁	
2樓廁所左側	2樓廁所右側	2樓左側樓梯旁	2樓右側樓梯旁	
3樓廁所左側	3樓廁所右側	3樓左側樓梯旁	3樓右側樓梯旁	3樓電梯旁
4樓廁所左側	4樓廁所右側	4樓左側樓梯旁	4樓右側樓梯旁	4樓電梯旁
5樓廁所左側	5樓廁所右側	5樓左側樓梯旁	5樓右側樓梯旁	5樓電梯旁
6樓廁所左側	6樓廁所右側	6樓左側樓梯旁	6樓右側樓梯旁	6樓電梯旁
7樓廁所左側	7樓廁所右側	7樓左側樓梯旁	7樓右側樓梯旁	7樓電梯旁
8樓廁所左側	8樓廁所右側	8樓左側樓梯旁	8樓右側樓梯旁	8樓電梯旁
9樓廁所左側	9樓廁所右側	9樓左側樓梯旁	9樓右側樓梯旁	9樓電梯旁
10樓廁所左側	10樓廁所右側	10樓左側樓梯旁	10樓右側樓梯旁	10樓電梯旁

本圖更新日期:109年12月